



Cowper Road

Harpenden, AL5 5NH

Immaculately presented three bedroom family home, arranged over three floors with a super, low maintenance garden and the additional benefit of a Gym / Home Office. Newly extended, stunning open plan kitchen diner. Ideally located for schooling and within walking distance of both the station and town centre.

Guide price £1,095,000

Cowper Road

Harpenden, AL5 5NH



- Beautifully presented throughout
- Arranged over three floors
- Two Reception Rooms
- Newly extended open plan Kitchen Diner
- Low maintenance Garden
- Garden Gym / Home Office
- Ideally located for schooling
- Close to town centre & station
- Council Tax Band E

Entrance Hall

Dressing Room

5'8" x 5'6" (1.73 x 1.70)

Living Room

14'3" (max) x 12'9" (4.35 (max) x 3.91)

Family Bathroom

Bedroom One

13'5" (max) x 13'1" (4.11 (max) x 4.00)

Family Room

11'11" x 10'11" (3.64 x 3.34)

En-suite WC

Kitchen / Dining Room

19'7" x 18'4" (max) (5.97 x 5.59 (max))

Garden Gym / Home Office

14'9" x 11'5" (4.50 x 3.48)

Shower Room

Store

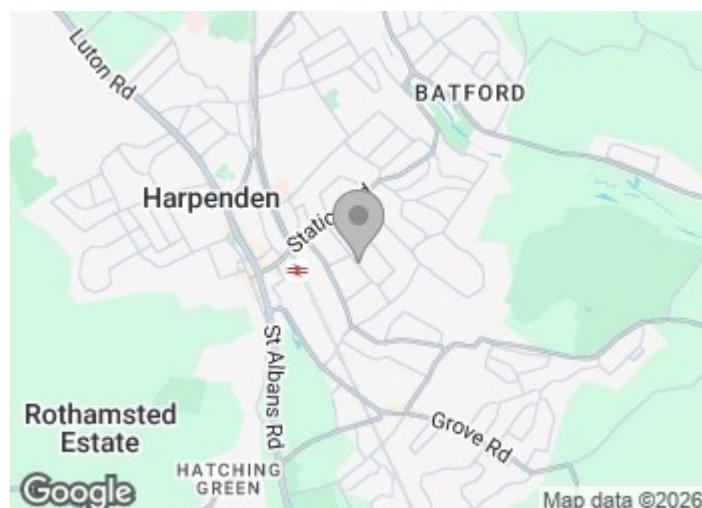
6'2" x 3'8" (1.90 x 1.14)

Bedroom Two

11'11" x 11'10" (3.65 x 3.62)

Bedroom Three

12'7" x 11'10" (3.86 x 3.63)

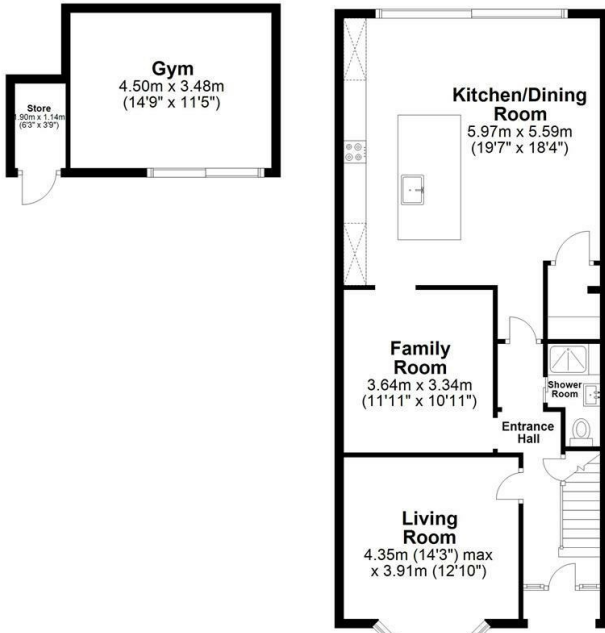




Floor Plan

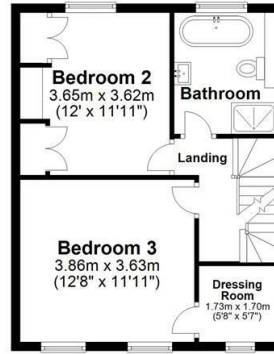
Ground Floor

Main area: approx. 76.3 sq. metres (821.6 sq. feet)
Plus outbuildings, approx. 18.0 sq. metres (193.8 sq. feet)



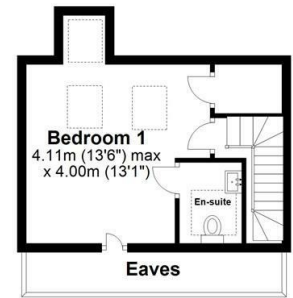
First Floor

Approx. 42.1 sq. metres (453.3 sq. feet)



Second Floor

Approx. 23.9 sq. metres (257.2 sq. feet)



Main area: Approx. 142.3 sq. metres (1532.0 sq. feet)
Plus outbuildings, approx. 18.0 sq. metres (193.8 sq. feet)

Sketch layout only. Not to scale. Plan produced for Whittaker & Co.

Plan produced using PlanUp.

These particulars, whilst believed to be accurate are set out as a general outline only for guidance and do not constitute any part of an offer or contract. Intending purchasers should not rely on them as statements of representation of fact, but must satisfy themselves by inspection or otherwise as to their accuracy. No person in this firm's employment has the authority to make or give any representation or warranty in respect of the property.

